



PHOTO COURTESY OF THOMAS KEEVER PHOTOGRAPHY

SCENIC VIEWS NATURAL NEWS

Holiday Lights *in* Garden

With indoor and outdoor activities, it's a holiday treat sure to amaze all. 2014 marks the Garden's 25th Anniversary year and the fourth year of welcoming guests to embrace the outdoors while strolling through the Garden with family and friends. Thousands of lights illuminating plants and trees, polar bears, and a family of penguins will showcase the Garden's winter beauty. More surprises will transform the Children's Garden into a sparkling, magical wonderland. The Farmhouse and General Store in the Heritage Garden Complex, donning simple holiday décor of the 1800's, will be open for tours.

Santa visits on Dec. 12, 19 & 21 to hear the wishes of children. A professional photographer will capture the cherished holiday moments. Guests may select and pay for their favorite photographs which will be ready for pick up as they depart the Garden.

While personal cameras are not permitted for Santa photos, guests may take photos at the outdoor Gingerbread House "Head in the Hole" where friends and families can be as silly or poised as they desire!

Stocked with free craft supplies and project ideas, Santa's Workshop will entice children to create a take home memento of the evening.

The Gift Shop will be open and filled with unique gifts sure to please all ages and tastes.

The festive atmosphere of the outdoor Beer & Wine Garden will bring together friends and strangers to toast the holidays. Refreshments and hot drinks will also be available for purchase. Live musical performances on select evenings will add to the merriment. Please visit www.capefearbg.org for a schedule of entertainment and more details.

Dates:

December 6, 10 – 14, and 17 – 23, 2014.

Admission:

Garden members: \$5; Non-members: \$10;
Military & Seniors 65+ \$9;
Children ages 6-12 \$5; under age 5 enter free.

Hours:

Open from 5:30 p.m. until 9 p.m.
Last entry at 8:15 p.m.

Thank You Sponsors!

Olde Fayetteville Insurance & Financial Services, Inc.
Bank of America
DK Oil Taylor Oil Company
Lafayette Ladyslippers Garden Club
Daphne and Ray Manning
Hedecoe Dentistry





A LETTER *from* OUR DIRECTOR



So much to Celebrate!

It was a wonderful time to join the Garden... on its 25th Anniversary. It has been a fantastic first year on the job and a milestone Garden anniversary year to boot. With a long list of events, we celebrated this great Garden and the people who have made it happen. I've so enjoyed meeting you and listening to your hopes and dreams for the Garden's next 25 years!

And forward we go together with our Garden upgrade and expansion plans, many of which were identified in the 2013

Strategic and Master Plan. Thanks to a generous donation, the new Reflection Garden to be located under the forest canopy on the eastern border of the McLaurin Camellia Garden was recently surveyed. The initial garden layout on the digital survey will soon be completed and on display in the workroom. Its features will include: fern island; moss walk; tranquility/Zen garden; water features; and meditation garden.

New renderings of the Children's Garden expansion are being drawn. New features include: tree walk and tree house; caterpillar tunnel; children's splash pad; and butterfly maze that will connect the Children's Garden with the Butterfly Stroll. We've gotten a lot of great ideas from our friends at Lewis Ginter Botanical Garden just outside of Richmond: www.lewisginter.org. If your travel plans head you north, try and stop in. It is a truly magnificent garden. With a current Cape Fear Botanical Garden membership card, you are entitled to special admission privileges at Lewis Ginter Botanical Garden and many other gardens associated with the American Horticultural Society.

And just as we expand our Garden, we also are increasing our members, volunteers, and community partnerships. Thank you for all of your very generous support. Our great Garden would not be possible without YOU!

Kind regards,

Mission

The mission of Cape Fear Botanical Garden is to transform people's relationship with plants and the natural world.

2014.15 BOARD of DIRECTORS

Executive Board

Lynne Nimocks, President
 Beegie Caviness, Vice President
 Joan Allen, Development
 Maureen McNeill, Recording Secretary
 Thomas Bell, Treasurer

Full Board

Molly Alderman	Bill Pollitt
Charles Broadwell	George Quigley
Mandy Brown	Emily Schaefer
Jesse Byrd	Harry Shaw
Benny Foster	Dennis Walters
Ray Manning	Colleen Wellons
Calvin Mims	

Lorette Hollinshed, Director Emeritus
 Dot Wyatt, Honorary Campaign Chair

Garden Staff

Executive Director
 Ry Southard

Education

Sherry Carpenter, Naturalist/
 Education Coordinator
 Amy Stidham, Therapeutic Horticulture /
 Education Coordinator

Events

Sharon Osborne, Director
 Shirley Rodriguez, Events Coordinator
 Brian Tyler, Events Coordinator

Finance and Operations

Dennis Cedzo, Director
 Chris Walker, Office Manager
 Rodney Carlton, Custodian

Horticulture and Garden

Adriana Quiñones, Director
 Thomas Keever, Staff Photographer/
 Horticulture Technician
 Minda Daughtry, Horticulture Technician
 Antonio Ramirez, Horticulture Technician
 Jason Spence, Horticulture Technician
 Ryan Winkler, Horticulture Technician
 Nathan Weeks, Horticulture Volunteer

Marketing

Meg Suraci, Director
 Helen Johnson, Administrative Assistant

Visitor Services

Martha Lerario, Director
 Susanne Backes, Sales Associate
 Marlene Morschauser, Sales Associate
 Rose Marie Matthews-Knight, Admissions
 Assistant
 Diane Quinones, Admissions Assistant

Volunteer Office

Traci Cardenas, Volunteer Coordinator

Continuing the Growth of a GREAT GARDEN

BY ADRIANA QUINONES,
DIRECTOR OF HORTICULTURE



The Mary McLaurin Camellia Garden is one of the most peaceful and quiet places in the Garden. Who doesn't love a plant that will bloom its head off when other plants are shutting down for the cold season ahead?

In the Fall newsletter we shared in general terms our plans are for the Camellia Garden. Now, I want to give you some specifics about what we are and will be doing.

One area of significant growth is our relationship with Fayetteville Technical Community College (FTCC) and the Horticulture Education Center. The Garden is an integral part of their curriculum due to being the living laboratory for many of their classes, and we strive to integrate hands-on learning opportunities for the students. In conjunction with the irrigation course offered through FTCC, the Garden is in the process of replacing parts of the Camellia Garden irrigation system which was failing due to water and soil damage. With the generous support of our local sponsor Hubbard Pipe and Supply of Fayetteville, and Rain Bird Corporation for the donation of many of the needed supplies, we were able to start this project. While walking through the garden you may see signs of this activity, either by noticing the disturbed ground or seeing the many students at work and getting their hand dirty. Future Garden projects will be offered to FTCC students in order to enhance their

studies and give them real world experience.

As many of our garden volunteers are aware, after most storms there is a concerted effort to re-grade paths and put the sand surface back into place. A key to a great garden is accessibility for all, therefore as we upgrade the existing garden we will also work to install walkways that are ADA compliant and which will allow rainwater to freely dissipate without causing erosion. To do this we will need to install a permeable paver system. To maintain the historic look of the garden pathways, gravel pavers have been selected. Gravel pavers are an interlocking plastic grid system that can be installed under grade. Made with 100% recycled materials, the pavers also minimize surface water runoff, and reduce or eliminate erosion. As an attractive and sustainable alternative to traditional concrete or asphalt, the pavers will maintain the look and functionality of the current pathways - approximately 21,100 square feet. We are confident that this choice will add to the ability of all to enjoy our beautiful camellias.

A new gathering spot will be added within the garden. Camellias are native to Asia and Japan. To honor their history, we will by develop an aesthetically pleasing pavilion that blends with the look of the garden. Though the design is in concept stage, the pavilion will be an open structure with views into the Camellia Garden, the capacity for at least

50 people standing, and situated adjacent to the Butterfly Stroll. As an added benefit, the pavilion will be an ideal spot for viewing the camellias during less than ideal weather.

Plans include enhancing the garden with additional complementary plantings, as well as increasing the diversity of the collection. Although mentioned last, this is one of the most important aspects of our camellia collection. Since camellias are an Asiatic species, Japanese maples, stewartias, and hydrangeas will be added. Recently we planted a small specimen of *Styrax japonica* which was donated by Cathy McCamish. We hope to add some more cultivars of these beautiful trees. While our collection consists mostly of *C. sasanqua* and *C. japonica* cultivars, along with a few hybrids, we're on the lookout for more of these rarer beauties to show up in the garden in the coming year.

All of these upgrades will add to the beauty and excitement of the Camellia Garden. The actual project cost is still unknown but is estimated at \$200,000. If you have a special affinity or love of this group of plants, won't you consider a donation to help us grow the Camellia Garden? The generous and ongoing support of our members and donors is a vital part of the Garden's future. Let's all continue to make Cape Fear Botanical Garden the shining jewel in the crown of Fayetteville!

Giving and GIVING BACK

RECOGNIZING MARTHA DUELL

Celebrating 90 Years Young!

On a beautiful Sunday afternoon in September, the Garden's was honored to host Martha Duell's 90th Birthday in the Orangery. Along with over 250 of her friends, we traded stories and accolades of Martha's deep and decades long involvement with the Garden and Fayetteville. Martha was one of the principal founders of the Garden 25 years ago. As the story goes, she lured all sorts of volunteers into the planning efforts with her famous 5 course cuisine francaise lunches – mais oui!

Endowment Created

We are so pleased to announce The Col. Clifford, Martha, and Robert Duell Charitable Endowment for Cape Fear Botanical Garden. This endowment was funded with a generous donation from Martha and was formed with the help from our friends at Cumberland Community Foundation. Thank you Martha! We love you.

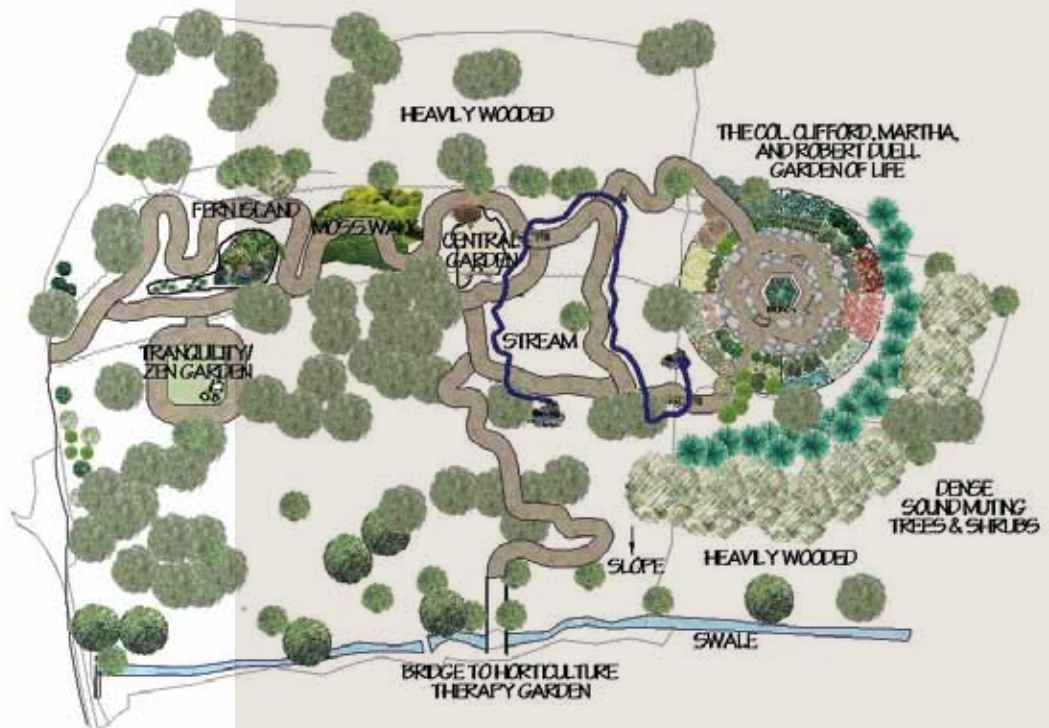


Garden Named

We have officially begun the planning process for the new Reflection Garden. The survey has been completed and a civil engineering analysis is underway. The garden will be located on the riverside of the Camellia Garden and utilize a spectacular forest canopy. As a place for quiet reflection, the garden will be comprised of five smaller gardens such as Fern Island, Moss Walk, Tranquility/Zen Garden, and a Rock Garden with a water feature.

The Destination Garden will be based upon a sundial and the 12 months of the year. It has recently been named by Martha Duell: The Col. Clifford, Martha, and Robert Duell "Garden of Life."

If you would like to name a garden, please contact Ry Southard for more information.





FALL 2014 “Intro to Horticulture”

The second session of “Intro to Horticulture” successfully concluded on October 23, 2014, at Cape Fear Botanical Garden with the graduation of nine veterans including Alumni of the Wounded Warrior Project and members of Fort Bragg’s Warrior Transition Battalion. The ceremony ended with the Warriors participating in the groundbreaking at the site of the new Reflection Garden.

Cape Fear Botanical Garden (CFBG), the Cumberland County Cooperative Extension Master Gardener Volunteer Program (CCEMGVA) and Fayetteville Technical Community College Horticulture Technology/Management Program (FTCC), partnered with Joe Brazzle of the Wounded Warrior Project to present the six-week program.

With a focus on stress recovery, the basics of horticulture were introduced to Warriors through interactive and inspirational opportunities to explore new skills during the classes “Achieving Balance,” “New Beginnings,” “Multiply and Propagate,” “Branching Out and Taking Shape,” “Grow, Harvest, Preserve,” and “Rest and Restoration.” Classes were designed to connect horticulture with everyday life, blend hands-on learning and peer support, and provide inspiration, motivation and encouragement to the individuals attending. Therapeutic horticulture also leads to cognitive, occupational, physical and spiritual benefits.

Participants left lasting contributions in the Garden by building a raised bed to grow vegetables for the local food bank and planting a native Paw-Paw tree.

“I am pleased to say that we are planning an expanded program and partnership for the Spring 2015 session,” said Ry Southard, Executive Director, Cape Fear Botanical Garden.

For more information, contact Amy Stidham, Therapeutic Horticulture Director via email: astidham@capefearbg.org.



power2give.org is an online cultural marketplace designed to connect donors with art and cultural non-profit organizations projects in need of funding. We appreciate the opportunity to participate in the power2give.org platform. Since February 2013, the Garden has posted six projects on power2give.org including these three recent projects.

As with most birthdays and anniversaries, a **“Wish List of Gifts”** typically accompanies! Celebrating an anniversary of 25 wonderful years, the Garden has compiled a list of its own. Items were requests made by both our Horticulture and Education teams. Thank you to the generosity of our donors the \$2,500 goal was met and gifts purchased.

“Gators Welcome in the Garden” project goal of \$2,500 for a down payment to purchase a small utility vehicle was also met! We are actively exploring financing options to utilize these funds. The Horticulture staff is thrilled to know that the once trusty but now tired and old Gator will be retired upon the arrival of a snappy, new Gator.

Our current project **“Caught in a Trap!”** will allow us to build movable bog gardens for carnivorous plants including Venus flytraps, Sundews, Pitcher plant, Butterworts and Bladderworts. As a donor to this project, you can help us catch people’s attention as a destination with an amazing adventure! No worries for humans, carnivorous plants generally stick to a diet of bugs!

Thank you to all who have donated to our projects. There’s still time to donate to **“Caught in a Trap”** and your donation will go even further – as each dollar is matched by 50 cents from Arts Council of Fayetteville/Cumberland County. Visit at **power2give.org/fayetteville** to learn more and donate.



Garden Awarded GRANTS

We are sincerely grateful for the grants, and the ongoing support and commitment of these organizations to advocate for our community's non-profits.



Arts Council of Fayetteville/Cumberland County has awarded the Garden essential funding through an Operating Support Grant.



Cumberland Community Foundation, through its donor advised funds and Garden specific endowments, has awarded funding to assist with educational programs and operating expenses, and the 2014 Lily Endowment Challenge matching funds which will assist the Garden in achieving sustainability through endowments.



Cumberland County Tourism Development Authority granted funds to assist with our ongoing regional marketing campaign. These funds allow us to raise awareness of the Garden as a premier cultural destination and bring regional and national tourists into our community.



Fayetteville Technical Community College grant supports the educational programming which includes the use of Garden's facilities as a living laboratory for FTCC horticulture technology students. This partnership has flourished over the years benefiting both organizations.



Youth Growth Stock Trust grant funds assist with expenses in bringing elementary school students to the Garden who may not otherwise experience our unique learning opportunity.



SHOPPING *ideas* for the HOLIDAYS

The Garden Gift Shop is the place to find unique and thoughtful gifts for everyone on your list. From gardening gadgets, books and toys to beautiful ornaments, locally made treats and pottery, we can help you with your shopping. This year we also have a wonderful selection of candles and diffusers that will bring the magical scent of the holidays to your home. Shop seven days a week from 10 a.m.-4 p.m. in a beautiful surrounding with ample parking. We'll use our signature bags and tissue, adding some ribbons to your purchases so they'll be ready to put under the tree!



PROGRAMS and EVENTS

Seminars are free to members and to non-members paying General Admission. Advance registration is appreciated; please call: 910.486.0221 x 20.

Ewww!! There's a Bug in My House

Dec. 6, 2014; 1-2:30 p.m.

Learn which insects are typically seen in the home and garden, and just what they are doing there. Followed by tips on which control measures are most effective in given situation and whether or not control is necessary.

The Piedmont Ecosystem

Dec. 11, 2014; 1-2:30 p.m.

Beth Gunn of the N.C. Wildlife Resources Commission will provide techniques for teachers to take the classroom outdoors, give participants practice in Piedmont wildlife identification and classification, as well as ways to bring native wildlife artifacts into the classroom.

Bryophytes: Mosses and Lichens

Dec. 17, 2014; 1-2:30 p.m.

Learn about bryophytes with Linda Sue Barnes, a Botanist and CFBG docent. Sometimes called the amphibians of the plant world, bryophytes live mainly in very moist habitats and require water for fertilization. Weather permitting a walking tour will be included.

NC Wildlife Resources Commission Overview

Jan. 15, 2015; 1-2:30 p.m.

Presented by a District 4 fisheries biologist, the seminar includes an overview of the Wildlife Resource Commission, the job of a fisheries biologist, and research currently being conducting in the Cape Fear River basin.

Nature Tales

Our **FREE** preschool story and nature time is presented in partnership with Cumberland County Public Library and Information Center. Each month we explore a different natural science theme. Two sessions per the scheduled morning: 9:30-10:30 a.m. session is for two to four year-olds; the 10:30 -11:30 a.m. is for five and six year-olds.

Dec. 2 & 6, 2014: Amazing Ice

Jan. 6 & 10, 2015: Frozen

Feb. 3 & 7, 2015: Love is in the Air

Mar. 7 & 10, 2015: The Buzz about Bees

Pre-registration is required; visit capefearbg.org Calendar page, select the date that you are interested in attending then click the link to register. You may also register by phone 910.486.0221.

For more information about all of our events or education programs, visit www.capefearbg.org.

Heritage Festival Thanks

To the pleasure of our visitors on October 4th and 5th the Garden stepped back in time with tours of the Farmhouse, General Store and Heritage Garden Complex, all in celebration of 19th century North Carolina agriculture and lifestyle.

Thanks are extended to Gran'daddy June Bug for his story telling, The Parsons for playing entertaining homegrown tunes and

bluegrass, the Army Ground Forces Band "Dixie Land" for their Sunday afternoon performance, the Tarheel Quilters Guild for showing their talent at the "Floral Fantasy Quilt Show", and the Master Gardeners and Fayetteville Technical Community College Horticulture Education Center for participating in the Fall Plant Sale with an interesting and exciting selection of plants.

A trusty and devoted team of volunteers worked tirelessly to make this two day event a success – thank you all for the outstanding work!

Special thanks to our sponsors: Carolina Convention Services & Rentals, King Party Rentals, Southern Gin & Grain Company, and Spirit Halloween.

2013.14 HONOR ROLL of DONORS

Cape Fear Botanical Garden thanks the following contributors to the Friends of the Botanical Garden for their generous contributions.

DIRECTOR'S SOCIETY

(Cumulative Lifetime Giving of \$25,000 +)

Joan & Bob Allen
 Anonymous (2)
 The Arts Council of Fayetteville/
 Cumberland County
 Barbara Bass
 Mrs. Helen E. Batten*
 BB&T
 Mr. Charles W. Broadwell
 Mrs. Waverly C. Broadwell
 Charlotte Lilly Broadwell Fund
 Mr. Jesse H. Byrd
 The Cannon Foundation, Inc
 Dr. Franklin S. Clark III
 COMTECH
 Concrete Services Company
 Cornelia "Neill" Bullock Wilkins
 Charitable Endowment Fund
 Cumberland Community Foundation, Inc.
 County of Cumberland
 Mrs. James D. DeVane
 Mrs. Martha A. Duell
 Dr. & Mrs. Gerald L. Ellison
 W. C. English Foundation
 Fay Block Materials
 The Fayetteville Observer
 Fayetteville PWC
 Fayetteville Technical Community College
 (FTCC)
 Mr. & Mrs. Richard Fox, II
 Garden Club Council of Fayetteville
 Mr. Will Gillis
 Mrs. James Harper
 Mr. & Mrs. James D. Haugh
 Mary R. Mack Hayslip
 Mr. & Mrs. Vivian E. Hollinshed, Jr.
 Linda & Ralph Huff
 Patricia D. Hutaff*
 Lucy & J. Wes Jones
 Junior League of Fayetteville
 Anne & Tom Keith

Lafayette Ford, Inc.
 Lynn & Karl Legatski
 Mrs. Jerry D. Leggett
 Ashton W. Lilly*
 Daphne & Ray Manning
 Mr. & Mrs. Ron Matthews
 Mr. & Mrs. Albert O. McCauley
 Mary McLaurin*
 Thomas R. & Elizabeth E. McLean
 Foundation
 Mr. & Mrs. Graham Moore, Jr.
 MSC, Inc./Terminix
 Elisabeth B.* & David R. Nimocks, Jr.
 Lynne & David Nimocks
 Mr. & Mrs. Calvin P. Poole
 George & Paula Quigley
 RBC Bank, USA
 Florence Rogers Charitable Trust
 Judy & Leon Shackelford
 Mr. & Mrs. Harry F. Shaw
 Stanley Smith Horticultural Trust
 Tourism Development Authority
 The Wachovia Foundation
 Florence C. Wellons*
 WS Wellons Foundation
 Wells Fargo
 Mrs. James H. Wilson, Jr.
 Mary Fermanides & Harvey T. Wright
 Mrs. John W. Wyatt, Jr.
 The J. W. & D. B. Wyatt Foundation
 Mary Yarborough*
 Virginia & Ramon Yarborough

LIFE MEMBER CIRCLE

(Cumulative Lifetime Giving \$10,000 - \$24,999)

Anonymous
 Mr. & Mrs. Von Autry, Jr.*
 Mrs. Cora Bailey
 Dr. & Mrs. Kamal Bakri
 Belk Hensdale Company
 Ms. Janet Belk
 Mr. & Mrs. George W. Bender
 George A. Binder M.D.
 Sherri & Dohn Broadwell
 Mr. Dohn B. Broadwell, Sr.
 Dr. & Mrs. Dale Brown
 Dr. Finley A. Bryan

Laura & Chris Cates
 Dr. & Mrs. William Robert Caviness
 Mr. & Mrs. Watson Caviness
 The Honorable &
 Mrs. Anthony G. Chavonne
 Dr. & Mrs. Louis P. Clark, Jr.
 Margaret T. Clark
 Cumberland County Master Gardener
 Volunteer Association
 Judy & Jack Dewar
 Fayetteville Area New Car & Truck
 Dealers Association
 Fayetteville Garden Club
 First Citizens Bank
 Dr. & Mrs. Bennett A. Hayes, Jr.
 Healy Wholesale Company, Inc.
 Dr. & Mrs. Joel Hedgecoe
 Highland Lumber Company
 Holt Oil Company, Inc.
 Ikebana International
 International Paper
 Mr. & Mrs. J. Franklin Johnson, III
 Mrs. Weldon H. Jordan
 Leslie A. Kiewra
 Lafayette Ford, Inc.
 Lafayette Society Inc.
 Col. & Mrs. Donald D. Latella
 Julia McFadyen
 Mercedes Benz of Fayetteville
 Sarah & Frank Moorman
 NC Department of Environment &
 Natural Resources
 New Century Bank
 Virginia T. Oliver
 Piedmont Natural Gas Company
 Pine Needles Garden Club
 Mr. & Mrs. Lonnie M. Player
 Purolator
 Quality Sound & Video
 Ravenhill Dermatology Medical Clinic PC
 Mr. & Mrs. Robert G. Ray
 Mr. & Mrs. Riddick Revelle
 LTC (Ret) & Mrs. Dean F. Russell
 S & S Tree Service
 Mr. Robert H. Short*
 Mr. Joshua Small
 Bruce C. Steffes

Joy M. Strawn*
 Mrs. Esther Thompson
 Townsend Real Estate
 Youth Growth Stock Trust
 Opal & Charles Underwood
 Mrs. Terri Union & Mr. Carlos Zukowski*
 Valley Auto World BMW/VW
 Mr. & Mrs. Peter Van Borkulo, Jr.
 Mrs. William VanStory, III
 Wal-Mart Foundation
 W.S. Wellons Foundation
 Justin White*
 Mr. & Mrs. Owen E. Widman
 Mrs. Wilson F. Yarborough, Jr.

**ANNUAL GIFTS MADE BETWEEN
 JULY 1, 2013 & JUNE 30, 2014**

CAMELLIA CIRCLE (\$1,000 - \$9,999)

Loleta & Benny Foster
 Janice & Robert Fox
 Deborah & Walter Greene
 Maureen & Dan McNeill

DOGWOOD CIRCLE (\$500-\$999)

Pamela & Richard Falter
 Mr. & Mrs. John Mac Healy
 Catherine & Dan McBrayer
 Connie & Gordon Munden
 Amelie & Jay Riendl
 Marie T. Stewart
 Susan & Dennis Walters

PATRON (\$250-\$499)

Mr. & Mrs. Larry L. Bass, Jr.
 Judy & Cindy Beard
 Brenda & Rick Booth
 Mrs. Nancy Broadwell
 Mr. Richard Broadwell
 Patricia & John Burton
 Michelle & David Courie
 Melanie & Mark Erwin
 Nona Fisher
 Gail & David Gilbert
 Jan & Duane Gilliam
 Dr. & Mrs. Harold L. Godwin
 Nancy & Brad Goodrum
 Mr. & Mrs. Daniel Griffin, III

Mary L. Hagan
 Ellen & Scott Hancox
 Melinda A Harrington
 Betty & Marshall Howie
 Martha & Mike Lerario
 Ann & Bryce Maddox
 Warren R. O'Brien
 Mr. & Mrs. Charles C. Powers, Jr.
 Mrs. Merle R. Prewitt
 Karen & Don Price
 Renate E. Roberts
 Dr. & Mrs. Richard Roux
 Nita Rummans
 Marian & Steve Schrum
 Dr. & Mrs. Richard H. Shereff
 Nancy & Dick Soffe
 Joyce & Ole Sorensen
 Lisa Thompson
 Jean C. Wagner
 Melanie Wyatt

CENTURION CIRCLE (\$100-\$249)

Linda & Norman Bailey
 Arnold Barefoot
 Mary Jon & Josh Barkman
 Mr. & Mrs. Curtis Barnes
 Maurice Braswell
 Marilyn B. Britt
 Mr. & Mrs. William M. Brooks, Jr.
 David C. Bryan
 Rick Bryant
 Mary Ann Cleveland
 Susan & Christian Connelly
 Kitty Davis
 Mr. & Mrs. Stanley D. Dodson
 Kensley & Trey Edge
 Dr. & Mrs. David Eigner
 Kim & Mark Fisher
 F.S. Gardner, Jr.
 Lise & Rick Glazier
 Laura Hafner
 Mr. & Mrs. Ralph P. Hamilton
 Maggie Hupcey
 Mr. Paul Johnson
 Karla Jordan
 Vicki & Larry Keen
 Elizabeth Keeney
 Dee Dee & Dick Kells

Linda & Jim Kizer
 Shirley & Jim Konneker
 Kim Korgie
 Judy & John Lennon
 Laurie Linder
 Marsha & Alfred Lunt
 Elizabeth & John Mackey
 Anne & Travis Maleno
 Katherine Marable
 Karole & Charles Mayer
 Joan & Jeff Miller
 Sarah & Frank Moorman
 Dana & Chuck Nguyen
 Mr. & Mrs. Robert E. Nimocks, Jr.
 Amanda & Ray Nimocks
 Ilene & Stephen Opet
 Dr. & Mrs. Henry E. Parfitt
 Libba Pate
 Mr. & Mrs. Leonard R. Perrow, Jr.
 Kate & Gilbert Perry, Kimberly
 Worthington
 Mr. and Mrs. William A. Pollitt
 John E. Raper, Jr.
 Harriette A. Reaves
 Mr. & Mrs. A. Lee Reeser, Jr.
 Dr. & Mrs. Stephen Rochman
 Mrs. Betty W. Rosenbaum
 Maureen & Joseph Running
 Debra Ryan
 Maria & Timothy Shea
 Carol Short
 Deborah & Frank Simpson
 Anne & Marty Sternlicht
 Brian J. Tyler & Dominic L. P. Storto
 Elaine & Ray Terrill
 Terri Union
 Suzanne & Mike Uzzell
 Lee & Paul Vieta
 Catheren B. Warren
 Mary & Richard Webb
 Donna, Arthur & Nathan Weeks
 Mr. & Mrs. Larry Welch
 Dr. Frank & Katherine Whaley
 Zula & Johnny Wood
 Kathy & Eugene Wright
 Janice & Jack Zeigler

HOUSEHOLD (\$60-99)

Mr. John Aarsen
 Nathan Abramson
 Esther Acker
 Mr. & Mrs. David B. Alabaster
 Amy Allen
 Dan Allyn
 Kim & Andy Almuetti
 Kathi & Buz Altshuler
 Robert Ames
 Miki & AJ Anderson
 Philip A. Anderson
 Richard E. Anglin
 Anonymous
 Sonya & Lawrence Anyanwu
 Cordelia & Michael Apicella
 Nadie Perez & Israel Arellano
 Karen & Tony Argo
 Doris Arredondo
 Vincencio Arriaga
 Sally Augustine
 Nicole & Cody Austin
 Debra M. & Robert S. Autry III
 Susanne Backes
 Joanne Balanda
 Amy & Wes Balmer
 Mr. & Mrs. Martin Balsamo
 Michael D. Banks
 Grace Kissling & George Barber
 Reverend & Mrs. Horace O. Barefoot
 Ellenor Barker
 Susan & Ronald Barrick
 Teri & Eddie Bartlett
 Sharyn Beal
 Jodene & Jonathan Beck
 Willa C. Bennett
 Clareann & Phil Berchtold
 Dr. Kasmin Davis & Mr. Neil Bergman
 Lynn B. Breeden & Dolph Berry
 Stephen Berti
 Jenna & Peter Best
 Andrea Bethauser
 Steve Billman
 Mr. & Mrs. Brennan Binkley
 Dr. & Mrs. Breeden Blackwell
 Katy & Graham Blanton
 Angela & Robert Blount
 Brett Blount
 Mr. & Mrs. Morris A. Blount, Sr.
 Stacye Blount
 Nan & Zoltan Bokeny
 Sandra & Butch Bolton
 William A. Bonnett
 David Bosma
 Clifford N. Bostic
 Janet Lee Bour
 Joan & Dick Bowen
 Mr. & Mrs. Sam Bowyer
 Joseph M. Boyd & Vicky T. Boyd
 Sybil E. Breece
 Martha Brennan
 Debbie & Gerald Brennehan
 Patsy Brewer
 Emilie & Keith Brey
 Lisa & Clarence Briggs
 Mary Brigham & Jim Pearson
 Victor J. Brow
 Eloise & Douglas Brown
 Elyse Brown & Tracy Brown
 Martha Brown
 Mr. & Mrs. Herbert Bryant
 Laurie & Mark Bryant
 Jessica & Ryan Bull
 Jeremiah Burgess
 Keauna Havard & Charles Burseson
 John & Sharon Buroker
 The Burton Family
 Timothy Butz
 Rachael & Mark Buzzelli
 Susan & Christopher Cadigan
 Jean & Mark Calvert
 John Campbell
 Stacy & Antonio Canas
 Mr. & Mrs. William Cannon
 Judy & Glenn Capps
 Megan & Paul Carlson
 Beth & Stan Carmical
 Joyce Carter
 Kathy & David Carter
 Ruby B. & Melvin S. Carter
 Carmela Casipe
 Maria del Pilar & Edwin Castro
 Mr. & Mrs. Dennis Cedzo
 Ki Byung Chae
 Caryn & Travis Chambers
 Maria & Juan Chavez
 A. Johnson Chestnutt
 Tere & Carl Chipman
 Dr. & Mrs. Robert S. Christian
 Kaye Christiansen
 Marc Christiansen
 Thomas A. Ciszek
 Linda Clark
 Susan & Charles Clement
 Jason Clowe
 David & Dawn Clukey
 Barbara Cockrell
 Virginia & Tom Colantuono
 George Colby
 Laura Cole
 Natasha & Sean Collins
 Nancy & Jeff Colt
 Denise J. Comulada
 Jennifer & Joshua Conary
 Jeanette & Kent Confer
 The Connelly Family
 John A. Cook
 Joanne and Gary B.* Copeland
 Daniel Corel
 Julissa & Todd Corona
 Jonathan Cote
 Mr. & Mrs. Paul Councilman, Sr.
 Carlyn & Clayton Craig
 W. Dempsey Craig
 Elizabeth & Frank Crumbley
 Ruth & Bill Crumley
 Mr. Thomas Cunningham
 Jacqueline & Theodore Dalton
 Prakash A. Dalvi
 Angela D'Amato
 Rachel & Charles Davis
 Linda & Bill Deaton
 Brooke & William Deaton
 Sheila & Tom Delahunty
 Denise DeLellis
 Donna Delgado
 Joe Delgado
 Chris Denny
 Amy & Eric Dent
 Seema & Shirish Devasthali
 Chris Dickey
 Betsy & Stuart Dixon
 Thomas Donnelly
 Jessie C. Dorn

Cathy & Ashwin Doss
 Carey V. Downing, Jr.
 Karen Dresel
 Carl Drew
 Patricia & Jimmy Driscoll
 Robin & Mike Dudley
 Gwen & Clyde Edwards
 Mr. Mel Edwards
 Shirlene & Earnest Edwards
 Donna Richardson
 Joan & Gary Eissingering
 The Elliott Family
 Phyllis Elmore
 Kim & Frank Eng
 Tyler & James England
 Laura & Jeremiah Espersen
 William B. Estes
 Mr. & Mrs. John S. Ewing
 Erika Worley & William Fackler
 Susanne Faircloth
 Girum Fayisje
 Johnny & Sandra Fermanides
 Lupita Fernandez
 Annabelle Fetterman
 Sydnie & Paul Fiesel
 Jason Fisher
 Thomas Fisher
 Mr. & Mrs. Carl P. Flanagan, Jr.
 Gary & Dawn Fleck
 Paula & Steve Fleming
 Bianca Foica-Braswell
 Meridith Fonseca & Jason Rublaitus
 Ms. Charlotte Fox
 Dr. & Mrs. Michael W. Freeman
 Gayle & John Frinak
 Dawn Fumarola
 Diane & Ron Funari
 Jeannine Gabel
 Helene & Kirch Gaede
 Robert B. Gaines
 Raewyn Galloway
 Mr. & Mrs. Richard Galt
 The Gant Family
 Veronika Garcia
 Cheryl & Clyde Garrett
 Nancy & Stephen Gasper
 Ruth & Robert Gates
 Mr. & Mrs. Donald R. Gaylord

Robin Gieniewski
 William A. Gilbert
 John S. Gimesh
 Bob & Irene Girouard
 Karen & Bill Goble
 R. B. Goforth, Jr.
 Monique & Jan Gojko
 Ann Goldsmith
 Mr. & Mrs. Don Goldwasser
 Beatriz Gomez
 Rhonda & Steve Gooding
 Lakshmi & Daniel Gordon
 Ed & Winnie Grannis, Jr.
 Sabrina & Neil Grant
 Peggy & Tom Grantonic
 Gene & Judith Gray
 Sidra Gray
 Charny Grigory
 Dianne & Scott Grumelot
 Anna & John Gudauskas
 Kristi Fortier & Logan Gulick
 Zina T. Gunter
 Marshall & Christl Hall
 June & Clifton Hammonds
 Mr. & Mrs. Bill Hardwick
 Sara & Mike Harner
 The Clayton Harrington Family
 Jessica & Harvey Harris
 Mr. & Mrs. Phillip B. Harris, Jr.
 Todd Harris
 Mr. & Mrs. Daniel Harrison
 Sarah & William Harvey, Jr.
 Kate Hasty
 Veronica Hathcock
 Dan Hawley
 Dr. & Mrs. Gerry S. Hayes
 Mark & Mine Dincer Hearp
 Stephanie & Jonathon Hecker
 Claire & David Hedgecoe
 Elaine Heinemann
 Cathryn & David Helms
 Susan & David Henderson
 Rubi & Richard Hendricks
 Christian A. Herrera
 Olivia & Billy Herring
 D. Lee Hersesy
 Jonathan Hicks
 Mr. & Mrs. Michael B. Hicks

Kathryn & Trevor Hill
 Carolyn & Paul Hinson
 Christy & Dustin Hinton
 Linda Holmes
 Janet & Henry Holt
 Mrs. Peggy Holt
 Harry & Priscilla Hooks
 Sheila & Bobby Horne
 Andrea & Steve Horosko
 Mr. & Mrs. Jason J. Horton
 Mr. & Mrs. Jay Hottel
 Mr. & Mrs. Steve Howard
 Wayne Howard
 Mr. & Mrs. Earl M. Hubbard
 Elizabeth B. Hubbard
 Brad Hullender
 Cindy Hume
 Amy Hutmacher
 Katherine Huynh
 Art & Joan Ingalls
 Barbara & Ronald Ingano
 David L. Irby
 Betty & Henry Izurieta
 Amy & Keith Jackson
 Barbara & Ceba Jackson
 Ebon & Frank James
 Mr. & Mrs. Michael E. Johnson
 Linn & Gordon Johnson
 Olga Johnson
 Sarah & Karl Johnson
 Trisha Johnson
 Denny Jolly
 Ertle Jones
 Wendy Jones
 LTC & Mrs. Carl M. Jordan, Jr.
 Mary G. & Walter Jordan
 Deidra Fleming & John Jurden
 Iris Goode & Ed Jutt
 Meghan Kane
 Paula Keeton
 Thomas Kever
 Purnima Swaharu & Amit Kelkar
 Deborah & Al Keller
 Jane Kennedy
 Margaret & James Kennedy
 Elizabeth A. Hart & William H. Kern
 Uzma Khan
 Bonnie & Bill Killoran

Elsie & Pat King
 Jane & Charlie King
 Mary Ellen & Randy Kirchner
 Alison & Adam Klakowicz
 Michael Koba
 Cami & Travis Koebecke
 Ginny & Mark Koenitzer
 Beth & Terry Kret
 Robert Kringel
 Regina O. Kuliyevev
 Michael Lada
 John Lammie
 Kay Lanier
 Joyce & John Lauby
 Jill & Robert Laverick
 Georgiann & Steven Lawrence
 Alan Laycock
 Heather Leach
 Jennifer & Dan Leaf
 Becky Lee
 Myoung Ok Lee
 Brenda Litz & Robert Leight
 Mr. & Mrs. Gene Lemley
 Jennifer & Xavier Lendof
 Catherine DeHorse & Gilbert Lesko
 Ann Lewis & Gregory Lima
 Elaine Lewis
 Joseph Lewis
 Linda & Dick Lewis
 Melvin Lewis
 Darlene Liedig
 Tulla Lightfoot
 Nicole LaBombard
 Colleen & Jeff Linenberger
 Anne & Kyle Litchfield
 Shannon Lobdell
 Lisa & Dean Lofthouse
 Diane & Jack Long
 Mr. & Mrs. James Lorenz
 Shelly & Jason Los
 Joyce Loughlin
 Mr. & Mrs. Richard Lovato
 Jamie & Philip Lovdal
 Dottie & Neil Lowell
 Ann & Buzz Loyd
 Lorraine & Neal MacArtor
 Ms. Barbara MacLean
 Anthoula Manuel

Cecelia & Rick Marks
 Karina & Roberto Marshall
 Nancy Martin
 Gina & Jose Martinez
 Mr. & Mrs. Rafael Martinez
 Lindsey & George Masterson
 Sharon & Eddie Mathis
 Margie & Jim Maxwell
 Mr. & Mrs. James McAndrews
 George McCallman
 Cathy & Donald McCamish
 Brady & Nathan McChristy
 Erin C. McConaughy
 Dr. & Mrs. James B. McCoy, III
 Stacey & Thomas McCuddy
 Mr. & Mrs. James McDermott
 Douglas S. McFarlane
 Toi & Wayne McGary
 Karen McGhee
 Dr. Daniel A. McInnis
 Sharon McLain
 Mr. & Mrs. Norbert McLamb
 Charles & Shirley McLaurin
 E. O. McLaurin
 Melanie McLean
 Hunter McMillan
 James McNiff
 Wendy McRae-Siebenbrodt
 Ann Marie & Kip Mendini
 Karen S. Mercer
 Elizabeth & Mark Milewicz
 Frances & Jimmy Miller
 Ray Miller
 Susan & Tom Miller
 Amy & Jeff Minson
 Terry Levitt & Patrick Mitchell
 Dagmar & Brian Mock
 Mr. Kareem Montague
 Michael Montgomery
 Wendy & Ray Morasse
 Gail & Andrew Morfesis
 Cheryl Morgan
 Justin Morris
 Kathy Mouton & Scott Shuford
 Heidi & Brian Mullane
 Mr. & Mrs. Alonzo Murray & Family
 Lorena Murray & David Nikkel
 Mr. & Mrs. Ronald Myers

Malia Mynderse
 Drake & Barry Neff
 Beth & Jay Nelson
 Crissy & Thomas Neville
 Dr. & Mrs. William H. Newman
 Mary & David Newsham
 Lynn & Steve Newsom
 Ann & Mike Nichols
 Amanda & Tyler Nimocks
 Susan Noble
 Karen & Mick Noland
 Joram Norket
 Susan & Bill Norman
 Mary Erwin & Hunter Olive
 Nancy & David Olson
 Nduche Onyeaso
 Emily & Thomas Opalak
 Kate Howard & Rick Ormsbee
 Natalie & Ed Orsted
 Michele & Pedro Osornio
 Barbara Overman
 Paul Padula
 Diane & William Palmer
 Pamela Gibson
 Jaebum Park
 Mrs. Ellen K. Parker
 Gittipong Paruchabutr
 Stephen Patterson
 Caren & Ric Payne
 Karla & William Peabody
 Claude Perkins
 Amy & Rick Perki
 Peggy & Ray Perry
 Mr. & Mrs. William E. Pfau
 William Philbrick
 Cristiana Piccinni
 Judith Pikul
 Helen Pilkay
 Kathy & Michael Pippin
 Catherine & Matthew Pisarchick
 Jeanne & Alan Pittman
 Mr. Gareth Pollard
 Bill Pope
 Carolyn & Thomas Pope
 Janet L. Powell
 Syh & Byron Powell
 Margaret M. Priddy
 Dr. & Mrs. Edward Pridgen

Wallis & Tom Quaintance
 Lindsay & John Quinn
 Barbara Randolph
 Michael Rau
 Anne Bradley Rawson
 Rita & Justin Ray
 Heather & Michael Raymond
 Jania Razo
 Connie & Paul Reaver
 June & Paul Reichle
 LTC & Mrs. William Reinhart
 Jeff Reitzel
 Gail & Glenn Riddle
 Meagan & Jonathan Riggs
 Lisa & Jason Riley
 Andreas Ringl
 Carmen Rivera
 Reade Rizzolo
 Ricky Roberts
 Julie & Michael Robertson
 Colonel & Mrs. Arturo Rodriguez
 Jessica & Josue Rodriguez
 Judy & Frank Roe
 Lynne & Anton Romy
 Susan Wilkinson & Ted Rose
 J Ross
 Paige & Ty Ross
 Mary & Harry Royle
 Johanna Royo
 Lauren Rudio
 Chris Ruminski
 Mary Russell
 Elsie Rutan
 Julie Ryan
 Sylvia & Champion Saint-Amand
 Cathy & Joe Salas
 Beth Early & Lenny Salzberg
 Amy & Mike Samperton
 Carole & Terry Samperton
 Jane & Edward Sanders
 Melissa Riddle & Troy Sanders
 Dr. & Mrs. William E. Sanderson
 Mary & Larry Santaw
 Virginia & Steve Satsky
 Crystal & John Sawyer
 Braden Schaad
 Gisela & Marcus Schilling
 Jan & Dave Scott

Sara Sealey
 Gesila & Idjtihad Shabazz
 Kim & Denny Shaffer
 Uri Shamshidov
 John G. Shaw
 Shelton & James Shearon
 Kay C. Sheets
 Susan & Michael Shoe
 Patty Shurtleff
 Margaret & Johnston Sifly
 Mr. & Mrs. John T. Sigmon
 Dianne & Troy Simmons
 Carl, Myra, Phillip, & Melissa Sims
 Mark & Janet Singletary
 Mr. & Mrs. R. Grant Singleton, III
 Jenny & Rudolph Singleton
 Jacob Slack
 Robin Sledge
 Anne & Walter Smiley
 Betty & Buck Smith
 Calvin Mims & Dwight Smith
 Clara & Robert Smith
 Meg & Jim Smith
 Merle Smith
 Joyce & Ritchie Smith
 Mr. & Mrs. Marvin W. Smith, Jr.
 Junghee Smits
 Elizabeth, Marjorie & Charles Snyder
 David Soro
 Suzanne & Gary Southard
 The Southey Family
 Charles Spear
 Jackie & Ian Stamatedes
 Pauline & Billy Starks
 Grant Steffan
 Jennifer & Jason Stehly
 Doug Stephens
 The Stern Family
 Amy Stidham
 Elizabeth & Beatrice Strack
 Bonnie & George Strickland
 Polly Strickland
 Betsy Stuart
 Linda & David Sullivan
 Martha & Bob Sullivan
 Elizabeth & Alan Sutton
 Ramona & Barry Swift
 Dr. & Mrs. Angelito Sy

Mary & Ralph Tack
 Melissa Taliaferro
 George Tatum
 Matthew Taverner
 James M. Taylor
 Danielle Terry
 Melinda & Peter Thayer
 Jean & Robert Theobald
 Gary Thomas
 Traci & Randy Thomas
 Susan & Mark Tingen
 Conny & Eugene Tinklepaugh
 Larry Tinney
 Christine Toolan
 Violeta & Eric E. Torres
 Mr. & Mrs. Bayard Treneman
 Kelly Tucker
 Hilda Tuff
 Michael Turpin
 Robert L. Tygh Jr.
 Francine & Stephen Umland
 Nancy & Chuck Umstead
 Karen & Ray Utley
 Eurika Jennings & Mayumi Uto
 Sharon Valentine
 Alison Van Nyhuis & Dean Swinford
 Sara VanderClute
 Anita & Mark Vestal
 Pamela & Joseph Vittorelli
 Dr. & Mrs. Floyd Waddle
 Shirley & Tim Walker
 Earnestine & Ward Wall
 Sarah & Caleb Waller
 Darlene & Larry Walsh
 The Warburg Family
 Donna & Eddie Waren
 Sandee & Marshall Waren
 Erika Warren
 Sue & Lee Warren
 Kathleen Watson
 Fran & Warren Way
 Carolyn Cone & L. Stacy Weaver, Jr.
 Sherry Weeks
 Mr. & Mrs. Max Weinstein
 Leah & Kris Wells
 Anna White
 Jennifer & Ted White
 Kathy White

Julie & Lee Whitten
 Rebekah & Ed Wiens
 Nilce & Jacob Wieties
 Beverle Wiggs
 Kay & Michael Willard
 Jackie & Dennis Williams
 Marilee Williams
 Martin Williams
 Karen Wilsey
 Lib & Bob Wilson
 Julie & Joseph Wilson
 Tyler Wilson
 Judith & Peter Wish
 The Wolds
 Jacob Wolf
 Dr. & Mrs.
 Michael G. Woodcock
 Elizabeth & Tommy Wooten
 Donna Wren
 Megan & Grant Yanagi
 Won Kyung Yang
 Anne & Jeremy Yeary
 Juanita Yerry
 Arleen & Drew Young
 Xiaohang Zha
 Kalli & Drew Ziegler
 Kathryn Zietkiewicz

INDIVIDUAL (\$30-\$59)

David Wayne Abels
 Heather Adamson
 Mrs. Maness I. Adcox
 Paul Adholla
 Leslie R. Aldridge
 Jane Almon
 Brenda Alt
 Elizabeth Anderson
 Mike Arnold
 Christina Astrova
 Stepahnie Bagby
 Elizabeth Barefoot
 April Bell
 Rosemary Bilby
 Cynthia Billings
 Margaret L. Birke
 Beverly S. Bishop
 Ms. Eloise (Dee) Boiselle
 Nicola Bonair

Rebecca Borowski
 Sarah W. Bradshaw
 Erika Brand
 Barbara Brewer
 Jacqueline Brewer
 Hal W. Broadfoot, Jr.
 Mary Anne Brooks
 Betty A. Brown
 Maria Brown
 Geraldine P. Bryan
 Irene G. Buffaloe
 Charles H. Butzgy
 Sylvia Byrd
 Jennifer Caci
 Joe B. Cain
 Joshua Caldwell
 Mrs. Helga Cardenas
 Traci Cardenas
 Alisone W. Carr
 Henry Clay Carter
 Mrs. Janet Carter
 Nancy Cashwell
 Judy Chavis
 Roger Chenoweth
 Angela Clemente
 Janet Connors
 Dorothy Crutchfield
 Corrine J. Culbreth
 Mrs. Jean Curtin
 William K. Dacus
 Anita Dais
 Sandra L. D'Ambrosio
 Mary Dassau
 Max Davis
 Charlotte Dawson
 Helen F. Matthews
 Sue Dennis
 Jim Depree
 Ms. Cindi Lou DeVoe
 Gail Dickens
 Sidonie Dickson
 Linda Dinklage
 Vera Dixon
 Monique Duley
 Landa Duszynski
 Patricia Dutton
 Cynthia S. Earl
 Susan Elkins

Becky Ensley
 Mrs. Frank G. Everett, Jr.
 Albert Fadel
 Patricia Ferguson
 Janis K. Fisher
 Eleanor W. Fleishman
 Harvey Fleishman
 Darla Fokes
 Sherri Foti
 Judie Fowler
 Patrick Franklin
 Julia Friend
 Angela Fulp
 Paul Gamble
 Mary C. Ganus
 Jacob George
 Randolph R. Gillmore
 Ms. Roswita Toepfer
 Allana Goodyear
 Harold W. Grace
 Marion Graham
 Emily S. Grosland
 Ms. Susan Grunke
 Jeffrey Gupton
 Elizabeth Gurney
 Betty R. Guy
 Alison Haddock
 Michele Hagan
 Cornelia Hale
 Maurine N. Hale
 Bonnie Haney
 Barbara Harold
 Gail Harris
 Noel V. Harris
 Josephine T. Hasty
 Margaret Hathaway
 Joy Haynes
 Cecelia Hayslip
 Jackie Haywood
 Joseph Henderson
 Jean Hermann
 Johanna R. Herring
 Baylor Hicks
 DeAnna Hinton
 Hazel C. Hinton
 Melanie Hinton
 Dr. Jo Ellen Hirsch
 Karin Hodsdon

Joyce Holbrook
 Mary Holland
 Tetyana Holmes
 Rebecca Horne
 Christine Horvath
 Hilda V. Hutton
 James Ikner
 Carol G. Ivey
 Caroline Jiamachello
 Glenda Johnson
 Susan Jordan
 L. Dwain Joyce
 Peter Keane
 A. Elizabeth Keever
 Rose Kennedy
 Janet King
 Roland Kleinman
 Betty N. Knoff
 Mrs. Mary N. Knutson
 Holly Kriner
 Diane Krivdo
 June Lancaster
 Carol Langdon
 Allison Lawhon
 Barbara Ann Lawson
 Inge Lepage
 Janine LePage
 Barbara Lepper
 Joyce Lipe
 Wenda Lockcuff
 Anthony Locklear
 Cheryl Lones
 Debbie Lown
 Earl Lucas
 William Ludden
 Carolyn D. Lynn
 Diane MacIlwinen
 Clara J. MacMillan
 Deanna Madison
 Kathryn Mann
 Richard Martin
 Mrs. Joseph A. McArthur
 Cathy McCall
 Keith McCammon
 Mrs. Robert O. McCoy, Jr.
 Frances McDonald
 Ms. Harriet E. McDonald
 Teresa Shaw McDougald

Mary McGarry
 Mrs. Grace McGrath
 Grady P. McKeithan
 Mrs. Edna L. McLaurin
 CasSandra C. McMillion
 Kathy McPhail
 Mrs. Robert L. McQueen
 Patricia A. Meeks
 Syble G. Meeks
 Carolyn Meigs
 Tanya Mercier
 Mrs. Marjorie W. Meredith
 Sherman Jack Meshaw
 Kay Mitchell
 Dorothy Monroe
 Karen Moore
 Mike Moore
 Willie Moore Jr.
 Vera J. Morgan
 Marlene Morschauer
 Donna Morse
 Cara Moultis
 Ms. Arlene J. Mulrooney
 Jennifer Murphy
 Judith J. Murphy
 Midori E. Murray
 BG(R) Joseph L. Nagel
 Debby Nasekos
 Barbara Naugle
 George Nelson
 Mrs. Debbie Nepstad
 Terri Neves
 Mrs. Mary Frances Newell
 Mollie Nielsen
 Pam Norman
 Hannelore Otten
 Dr. Omer E. Paquette
 Mrs. Bill D. Parrott
 Hamlata Patel
 Patricia Patton
 Jennifer Paul
 Beverly Perry
 Christine Plummer
 Jack Poglinco
 Sarah C. Porter
 Ms. Helga Powell
 Amanda Price
 Adriana Quiñones

Linda Raplee
 Herta Ray
 Marie Reale
 Carolyn Reaves
 Teresa Rebantad
 Jeri R. Redd
 Shirley Reichartz
 Carol Replinger
 Mary Rice
 Sandra A. Ritter
 Robert Ritzema
 Mary W. Rizor
 Renee Roagers
 Karen Leetz Roberts
 Carol Rogers
 Jean Roppoli
 Margie L. Rose
 Mr. James K. Rosser
 Mrs. H.M. Rulnick
 Trudy Rutherford
 Julia Odom- Rzonka
 Andrea Schempp
 Joel Schur
 Mark Schutz
 Barbara Sexton
 Biswas Shakya
 Hans Sherburne
 Lori Sheilds
 Susan Shields
 Janet L. Shipp
 Bryan Smith
 Carolyn P. Smith
 David A. Smith
 Ella Rose Smith
 Jennifer Smith
 Ry Southard
 Mimi Spears
 Bonnie Barefoot Speegle
 Stephanie Spence
 Janice D. Squires
 Shirley Stallings
 Jo Ann Stanford
 Pat Stang
 Pat Starrett
 Donald Stephenson
 Glinda Stephenson
 Beverley Stewart
 Ms. Judith R. Stoddard

Monica Stokes
 Frances L. Stone
 Ms. Drusylla Strickland
 Jes Strong
 Nick Strong
 Michael G. Strother
 Van Stryk
 Kay Stuertz
 A. Norman Sturdivant
 Bonnie L. Sullivan
 Jennifer Hanes Sullivan
 Margene E. Sunderland
 Meg Suraci
 Amy Swails
 Annette Szczekutek
 Elsie Cavanaugh Taylor
 Mary Taylor
 Sarah H. Taylor
 Grace Tew
 Theresa C. Thigpen
 Bo Thorp
 Mrs. Wilbur E. Traylor
 Tracey Traywick
 Eric Tripp
 Ann Turner Slider
 Mrs. Hamilton Underwood, Jr.
 Teresa Valdivia
 Liz Vasser
 Linda Vaughn
 David W. Wallwork
 Don Walter
 Beverly Warren
 Jeffrey K. Webb
 Mrs. Jeanette W. Webster
 Ms. Helen E. Welch
 Carolyn K. Wheeler
 Mrs. Kathleen F. Wholey
 Rita Wiggs
 Akemi Williams
 Candace Williams
 Dianne W. Williams
 Doris McPhail Williams
 Elizabeth Williams
 Patricia S. Williams
 Ruby Williams
 Sandra Williams
 Susan T. Williams
 Janice Wing

Donald Winwood
 Mr. Walter A. Wood, Sr.
 Ann L. Woodall
 Jennie H. Wright
 Sharon L. Wyckoff
 Lucy Zahran
 Tami Zalewski
 Carol Zeleznik

STUDENT (\$25)

Louis Bordeau
 Annette Bradford
 Nicole Carter
 Sara Chaparro
 Jessie Earp
 Judy Fisher
 Melissa Greene
 Nicole Hardin
 Stephen Heen
 Freddie King
 Steven Kirby
 Nicholas Lamont
 Michelle Locklear
 Ian McClimon
 Kenda McClimon
 Michael Norris
 Heather Ocegueda
 Rylie Osborn
 Nancy Owens
 Jane Peacock
 Alena Prytulenka
 Stephanie Ruth Rzonka
 Jason & Stephanie Spence
 Eva de la Vega
 Chulete A. Wallace
 Marie C. Wegerle
 Jeremy Wood

TRIAL (\$25)

Christy Beal
 Harry Cleveland Patricia R.
 Crowson
 Claudia Graham
 Karen Lauritsen
 Karen Lopez
 Katie McKinley
 JoAnne Moseley
 Andrew Nowak

Mary Joy Slesman
Justin Stein

CLUB

Colonial Garden Club
Dig & Dream Garden Club
Fayetteville Rose Society
Flora MacDonald Garden Club
LaFayette Garden Club
Woodland Garden Club

CORPORATE SILVER

Holt Oil Company, Inc.
Dr. & Mrs. J. Michael Ruff
Olde Fayetteville Insurance & Financial Services Inc.
S & S Tree Service
Southeastern Insurance Services, Inc.
Sullivan's Highland Funeral Service & Crematory, Inc.
Village Coffee House & Bakery

CORPORATE BRONZE

1st Source Plus
Ann's Flower Shop
Bell's Seed Store
C & S Properties
Celebrations
Colon Print Shop
Christina DeCampo
First Citizens Bank
H & H Constructors Inc.
Home Sales, Inc.
Just Party & Equipment Rental
Lafayette Ford, Inc.
Lisa's Custom Framing
Odell Smith & Son Grading & Utility Contractors, Inc.
Sherri Winstead Photography
Sweet Fi's Cakes
Tommy King's D.J. Entertainment

PHOTOGRAPHER BRONZE

All About Me Photography
Amanda Kochkodin Photography
Be Art Photography
Carlton Hubbard Photography
CL Creations Photography

Double Diddle Photography
Eye Candy Photography
Jaycee Photography
Jennifer B. Photography
L&M Productions
Life Reflections Photography
Meghan Nice Photography
Ryan David Jackson Photography
ShoMore Photography
Shutterbugs
Tyson's Touch Photography

HONORARY GIFTS *and* MEMORIALS

February 1, 2014 - October 31, 2014

IN HONOR OF

Joan E. Allen
by Mary and Harvey T. Wright, II
Ann's Flower Shop
by Pine Needles Garden Club
Ellenor Barker
by Beverley Stewart
Jeremy Bower
by Cross Creek-Briarwood Garden Club
Hal W. Broadfoot, Jr.
by Fayetteville Camellia Club,
LaFayette Ladyslippers Garden Club
Keith Clayton
by LaFayette Garden Club
Martha A. Duell
by Angel Carrion, William E. Clark,
Jacqueline & Theodore Dalton,
Yvonne & John Davis, Dr. & Mrs. Gerald
L. Ellison, Lise & Rick Glazier, John E.
Griffith, Denise Guthrie, Mrs. Melene
Hatcher, Margaret & Charles Hunger,
Karen & Ferdinand Irizarry, Robert P. Ives,
Damon Johns, Dottie & Neil Lowell,
Janine H Montgomery, Andrew Privette,
Mr. & Mrs. Riddick Revelle, Ry Southard
R.B. Goforth, Jr.
by Fayetteville Camellia Club
Maureen Hale
by Town & Country Garden Club
Linda Healy
by LaFayette Ladyslippers Garden Club

Ikebana Club of Fayetteville
by Fayetteville Camellia Club
Dan McNeill
by Ed & Winnie Grannis, Jr.
Roger Mercer
by Fayetteville Camellia Club
Jennifer and Alan Nazarchyk
by Dig-A-Bit Garden Club
Harold Newman
by Town & Country Garden Club
William Pollitt
by Fayetteville Camellia Club
George Quigley
by Cross Creek-Briarwood Garden Club,
Pine Needles Garden Club

Tricia and Andy Smith
by Dig-A-Bit Garden Club
Jennifer Smith
by Mr. & Mrs. Curtis Barnes,
Sandhills Daylily Club
Jennifer H. Sullivan
by Mary and Harvey T. Wright, II
Beverly and Sammy Warren
by Dig-A-Bit Garden Club
Amber Williams
by LaFayette Ladyslippers Garden Club,
Woodland Garden Club
The Robert Williams Home
by Dig-A-Bit Garden Club

IN MEMORY OF

Peggy Allman
by Dr. & Mrs. Gerald L. Ellison
Helen E. Batten
by Dr. & Mrs. Gerald L. Ellison
Edna Blackwell
by Cheryl Blackwell
Gary Copeland
by Dr. Franklin S. Clark III
Philip J. Crutchfield
by Dorothy Crutchfield
John Dickson
by Dr. Franklin S. Clark III,
Jenny and Rudolph Singleton
Robert Duell
by A. Elizabeth Keever, Bonnie & George
Strickland, Dig-A-Bit Garden Club,

Dr. & Mrs. Debi P. Chaudhuri, Dr. & Mrs. Gerald L. Ellison, Edeltraud Clark, James J. Lampros, Joel Schur, Le Club Francais de Fayetteville, Luther Wickline, Mrs. Martha A. Duell, Pete Baxley, Virginia H. Lampros
 Cecelia Gambill
 by Maurine N. Hale
 Betty Holloway
 by Mr. & Mrs. Curtis Barnes, Sandhills Daylily Club
 Patricia Hutaff
 by Arlene & David Burns, Bet & Sandy McClamroch, Beverley Stewart, Cape Fear Orthopaedic Clinic, Claire and Harry F. Shaw, Dr. & Mrs. Gerald L. Ellison, Dr. & Mrs. James S. Hall, Dr. & Mrs. John T. Henley, Jr., Dr. Franklin S. Clark III, Frank Averitt, Hoke & Lynn Pollock, Joan Wiley, Linda & Dick Lewis, Lucy and J. Wes Jones, Mary R. Mack Hayslip, Mrs. Joan English Allen, Mrs. Martha A. Duell, Mrs. Nancy

Broadwell, Mrs. Robert O. McCoy, Jr., Mrs. Weldon H. Jordan, Mrs. William A. VanStory, III, Sherry & Paul Roshka
 Robert Wayne Jones
 by Mrs. Sheryl N. Jones
 Allan Littlefield
 by Dr. & Mrs. Gerald L. Ellison
 Sylvia Lowell
 by Dottie & Neil Lowell
 Mary McLaurin
 by Ann & Charlton Austin, Anne & Leon Joyner, Jeanette & Sterling Nicholson, Mary Nelle Townsend, Teresa & Philip Fowler, Victor Shelburne
 Georgia McLeod
 by Dillon Roberts
 James McRae
 by Mrs. Martha A. Duell, Elisabeth Nimocks, Betsy & Stuart Dixon, Emily & Dickson Schaefer, Mary R. Mack Hayslip, Mrs. Weldon H. Jordan
 Marie Phelan
 by Elizabeth Gurney

Lucy Riddle
 by Fayetteville Camellia Club
 Virginia Rose
 by LaFayette Garden Club
 Robert Stapleton
 by Judy and Leon Shackelford
 Margaret Streit
 by LaFayette Garden Club
 Martha Claire Sutton
 by Mr. & Mrs. Owen E. Widman
 Carlos Zukowski
 by Jenny & Rudolph Singleton

We have made every effort to ensure accuracy in the Donor Honor Roll. If your name has been omitted, misspelled or incorrectly listed, please accept our apologies and bring the error to our attention by contacting Meg Suraci, Director of Marketing, at 910.486.0221 x 22. Please note, too, that if your gift was received after July 1, 2014, it will be reported in the next annual Donor Honor Roll. Contributions are tax deductible to the fullest extent allowed by law.

COME GROW with us



As we look upon the future, we want to be certain to honor the legacy that has given us root while at the same time acknowledging the vision that will keep us growing and flourishing. Please join us as we realize the possibilities. Your support helps us grow. Become a member or renew your membership. Check our website for engaging cultural events to inspire and excite, and educational activities to energize. Like us on Facebook and share our news with your friends, follow us on Twitter and review us on Trip Advisor.

We look forward to your visit!



CAPE FEAR BOTANICAL GARDEN

1989 - 2014

536 N. Eastern Blvd.
PO Box 53485
Fayetteville, NC 28305
P 910.486.0221 • F 910.486.4209
capefearbg.org

NON PROFIT
ORGANIZATION
U.S. POSTAGE
PAID
Fayetteville, NC
Permit No. 180

SCENIC VIEWS NATURAL NEWS

CAPE FEAR REGIONAL THEATRE

The 2014 - 2015 Theatre Season

Spamalot

September 18-October 12, 2014

The Bluest Eye

October 30-November 16, 2014

The Three Musketeers

January 22-February 8, 2015

Ain't Misbehavin'

March 5-22, 2015

The Trip to Bountiful

April 9-26, 2015

Avenue Q

May 14-31 2015



For tickets: Call 910.323.4233

Buy Online @ cfrrt.org Visit 1209 Hay Street



ARTS COUNCIL
FAYETTEVILLE/CUMBERLAND COUNTY



www.hearts.org

FAYETTEVILLE
Symphony
ORCHESTRA

Holiday Pops & Holiday Lights

Celebrate the season with a new holiday tradition!

SATURDAY, DECEMBER 6th

Cape Fear Botanical Garden | Fayetteville, NC

7:30pm



TICKETS: www.fayettevillesymphony.org | (910)433-4690